

DIGITAL PLATEMASTER 2340



DPM2340

INCREASE YOUR PROFIT POTENTIAL WITH PR

PRODUCTS DEVELOPED WITH QUICK-RESPONSE COMMERCIAL AND IN-PLANT PRINTERS IN MIND

At A.B.Dick we have focused our computer-to-plate product development on a segment of the market where there is always an urgent need to move work through the printing process faster, more accurately, and at a lower cost per job. Printers producing short run, single and multiple-color work fall into this group.

Our Digital PlateMaster (DPM) line of computer-to-plate systems have enabled such printers to achieve higher quality, faster turnaround, and reduce costs. Many printers now find themselves competing successfully in the production of high quality color work – an area they had previously ignored.

MEGA® plates, as well as film, are produced from your desktop computer – press-ready, and in a fraction of the time and expense required to make negatives and metal plates.

STREAMLINE YOUR WORKFLOW WITH DIRECT-TO-PLATE

The DPM2340 has the power to transform your prepress operation. Imagine the potential as your platemaking process becomes streamlined and automated. Stop “over-plating” and using high cost materials for all your print runs. With the DPM2340 you have the ability to create the most profitable plate solution to match each individual job.

THE SPEED YOU NEED TO GROW YOUR BUSINESS

You'll be amazed at how little time is required to produce high quality MEGA® plates with the power of digital platemaking. Your customers and employees will appreciate the high quality and quick turnaround that can be achieved. When you own a DPM2340 you'll spend less time with production, and more time growing your business.

A.B.DICK QUALITY YOU CAN PASS ON TO YOUR CUSTOMERS

Convenient and easy to use, this digital platemaking technology allows you to handle more jobs with increased efficiency and precision. When imaging direct to the plate, it is reasonable to expect that a better quality of image will be delivered. There are no intermediate stages, as when using film, so you get high quality press-ready materials without the hassle and expense of masking materials and conventional stripping. Less time will be spent checking job quality and registration.

Overall, a CTP plate will be cleaner and of better image quality, which will provide faster make-ready on press and better quality printed copies.

PRECISION IMAGE POSITIONING FOR YOUR PRESSES

The Printers RIP includes a unique software feature for plate positioning. Plate size and gripper margin set-ups are included to ensure perfectly imaged and positioned plates, time after time. In addition, the DPM2340 is supplied with a Calibration Manager. This is used to fine tune the output to suit the individual characteristics of each printing press in your shop.

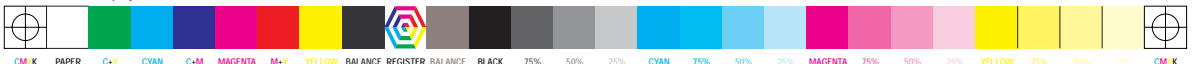
These features make this one of the most flexible pieces of pre-press equipment available.

Consider the computer-to-plate benefits of a DPM2340:

- Improved quality
- Increased productivity
- Faster turnaround
- Reduced operator involvement
- Increased profits



© 1999 A.B. Dick Company DIGITAL IMAGING AND PRESS PRODUCTS FOR PRINTERS



EMIUM COMPUTER-TO-PLATE TECHNOLOGY



Easy-to-use control panel has one button operation for all material handling functions.



Simply change the daylight loading cassettes to switch between MEGA® plates and film.



Self-replenishing plate processor has easy-access, deep tanks that constantly recirculate to extend chemistry life.

MEGAPRO® PROFESSIONAL POLYESTER PLATE MATERIALS

Polyester plates have been available for many years, but only recently, since the development of digital platesetters, has this type of plate material become widely accepted throughout the industry for all types of work, including high quality four-color process printing.

The DPM2340 uses the high quality MEGAPRO® plates. There are two grades of polyester plate material available. Both 5 mil and 8 mil materials provide run lengths of up to 25,000 impressions. A lower cost 7 mil paper-based material is also available and suitable for run lengths up to 10,000 impressions.

This choice of materials enables users to select the most suitable material for individual presses and print applications.

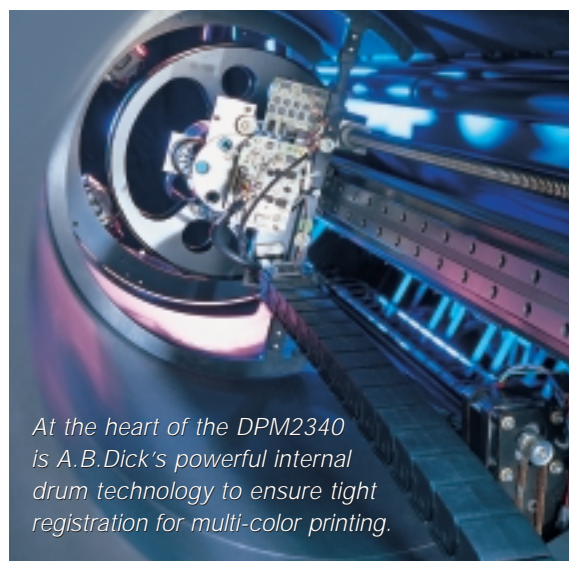
CHOOSE THE MOST SUITABLE MATERIAL – PLATES OR FILM – FOR INDIVIDUAL APPLICATIONS

With the DPM2340 you also have the option to produce film without compromising the high dot quality, accuracy or repeatability. This added flexibility allows you to create film for larger presses, longer print runs or special customer requests.

Plates are processed on-line in the DPM's completely integrated processor. The processor's shallow path virtually eliminates material jams and scratching. Film, once imaged, is sent to a take-up cassette for off-line processing.

SERVICE

The Digital PlateMaster line is the only direct-to-plate technology that's backed by the world-class service of A.B.Dick. The market leader in digital prepress, A.B.Dick Company has successfully installed over 1,000 DPM systems. For dependability, service, and low operating costs, nothing compares to the DPM2340 from A.B.Dick.



At the heart of the DPM2340 is A.B.Dick's powerful internal drum technology to ensure tight registration for multi-color printing.

DPM2340 FEATURES & ACCESSORIES

- Easy to operate
- 45 plates per hour at 900 dpi
- Internal drum, 900 to 3600 dpi in 17 discrete steps
- Accurate ripped image preview
- Daylight loading material cassettes
- In-line dual-tank processor
- Outputs plates and film in sizes up to 14"W x 20"L (356mm x 508mm)
- Accepts Postscript® and PDF files from most computer platforms
- Harlequin-based software RIP
- Optional Pentium-based RIP computer with Windows NT operating system

With a DPM2340, you can produce a four-color set of plates for less than a service bureau charges for a single sheet of film.



SPECIFICATIONS AND SUPPLIES

PHYSICAL SPECIFICATIONS

DIMENSIONS	54"H x 45"L x 28"W without plate catcher (137cm x 114cm x 71cm)
	54"H x 45"L x 41"W with plate catcher (137cm x 114cm x 104cm)
WEIGHT	675 lbs. (306kg)

OPERATING SPECIFICATIONS

PLUMBING/VENTILATION	No plumbing required. Do not install machine in a spray powder environment.
ENVIRONMENTAL SPECIFICATIONS	30% to 70% relative humidity (RH)
	65° to 80° F. (19° to 27° C)
LASER	Class 1 Laser Product (Red Laser Diode) According to EN60825-1:1994
CERTIFICATIONS	UL, CSA, CE, FCC
ELECTRICAL REQUIREMENTS	180 to 250 volts AC, 50/60 Hz;
	20 AMPS@60 Hz; 16 AMPS@50 Hz; Receptacle (NEMA L6-20R, US only) must be supplied by customer.

PRINTERS RIP® SPECIFICATIONS

TYPE	Harlequin-based software RIP
INPUT	Accepts Postscript® and PDF files from most computer platforms
FONTS	35 standard fonts, additional fonts downloadable, font management

OUTPUT SPECIFICATIONS

MEDIA SIZE	Plate: 13 3/8"W x 20"L (340mm x 508mm)
	Film: 14"W x 20"L (356mm x 508mm)
	Minimum: 9"W x 12"L (229mm x 305mm)
IMAGE SIZE MAXIMUM	Plate: 13 3/8"W x 19 1/4"L (340.3mm x 489mm)
	Film: 14"W x 19 1/4"L (356mm x 489mm)
MEDIA	Provided in a 200' (61m) disposable daylight loading cassette in widths from 9" to 13 3/8" (228mm x 340mm) for plate and 9" to 14" (228mm x 355mm) for film
PLATE MATERIALS	MEGAPRO® 7 mil paper based plates MEGAPRO® 5 mil film based plates MEGAPRO® 8 mil film based plates
CHEMISTRY	MEGA® Activator and Stabilizer
FILM MATERIAL	Rapid Access Film Negative
IMAGING DEVICE	Internal Drum, 900 to 3600 dpi in 17 discrete steps
SPOT SIZE	10 to 30 µm
INTERNAL PROCESSOR	In-line dual-tank processor with temperature control, recirculation and filtering; 5.5 gallon (20.8 liter) volume each tank with gravity-fed replenishment system
PRODUCTION SPEED	45 plates per hour at 900 dpi;
	38@1200 dpi; 28@2400 dpi; 22@3600 dpi
REPEATABILITY	+/- .0002" (.05mm)

OPTIONAL ACCESSORIES

RIP STATION*	Intel Pentium® Processor, Windows NT®, 10/100baseT Ethernet® Card, Ultra wide differential SCSI, Monitor, Keyboard and Mouse
TAKE-UP CASSETTE	Take-up cassette for transporting media to off line processors; 32 foot (9.7m) capacity. Required for film output.

Our policy of continuous product improvement may result in specification changes without notice.



THE DPM2340

This workhorse is the perfect addition to your printing operation. Imagine the improved efficiency when you add the DPM2340 to your equipment line-up. Better quality. Improved speed. Digital accuracy. All for an affordable price.

DPM2340 PLATES & FILM MATERIAL

DPM2340 MEGAPRO® 7 MIL PAPER PLATES

23708*	11 1/2" x 200'	292mm x 61m
23709	9" x 200'	229mm x 61m
23710	10" x 200'	254mm x 61m
23711	11" x 200'	279mm x 61m
23712	12" x 200'	305mm x 61m
23725*	12 1/2" x 200'	318mm x 61m
23713	13" x 200'	330mm x 61m
23733	13 3/8" x 200'	340mm x 61m
23738*	9 1/2" x 200'	238mm x 61m

DPM2340 MEGAPRO® 8 MIL POLYESTER PLATES

23808*	11 1/2" x 200'	292mm x 61m
23809*	9" x 200'	229mm x 61m
23810	10" x 200'	254mm x 61m
23811	11" x 200'	279mm x 61m
23812	12" x 200'	305mm x 61m
23813	13" x 200'	330mm x 61m
23832	13.2" x 200'	335mm x 61m
23833	13 3/8" x 200'	340mm x 61m
23838*	9 1/2" x 200'	238mm x 61m

DPM2340 MEGAPRO® 5 MIL POLYESTER PLATES

23508*	11 1/2" x 200'	292mm x 61m
23509	9" x 200'	229mm x 61m
23510	10" x 200'	254mm x 61m
23511	11" x 200'	279mm x 61m
23512	12" x 200'	305mm x 61m
23513	13" x 200'	330mm x 61m
23533*	13 3/8" x 200'	340mm x 61m
23538	9 1/2" x 200'	238mm x 61m

DPM2340 IMAGESETTING FILM

23609*	9" x 200'	229mm x 61m
23612	12" x 200'	305mm x 61m
23613*	13" x 200'	330mm x 61m
23633	13 3/8" x 200'	340mm x 61m
23614	14" x 200'	356mm x 61m

*Special order product subject to 90-day lead time.
Note: All MEGAPRO® Plates and Imagesetting Film are packaged 1 Cassette/Case.

MEGA® CHEMISTRY & ACCESSORIES

38750	Activator (Concentrate)	Four 1 gal. bottles/case (3.7 liters)
38756	Stabilizer (Concentrate)	Four 1 gal. bottles/case (3.7 liters)
38745	Activator (Concentrate)	One 5 gal. cubitainer (18.9 liters)
38753	Stabilizer (Concentrate)	One 5 gal. cubitainer (18.9 liters)
38766	Etch	Six 1 qt. bottles/case (.9 liters)
38776	Fountain Concentrate	Six 1 qt. bottles/case (.9 liters)
38773	Fountain Concentrate	Four 1 gal. bottles/case (3.7 liters)
38778	MEGA CMS+ Fountain Conc. Special formulation for continuous moisture systems using silver emulsion poly plates and/or web press applications	One 1 gal. bottles/case (3.7 liters)
38771	Deletion Fluid	Two 120cc btls./cs.
38702	Silver-Sub	Alcohol substitute (1 liter btl.)
38704	Silver-Wet	Fountain wetting additive (1 liter btl.)
44114	Cube Dispenser Kit	For easy dispensing of 38745 and 38753
59727	12 Step Platemaker Grey Scale	Reflection
38772	MEGA Plate System Deletion Pen	Each
50000	Chemgon Waste Treatment	For environmentally safe chemical disposal
58721	MEGA Black Ink	1 pound can (4 kg)
59499	MEGA Black Ink	5 pound can (2.2 kg)

IMAGESETTING FILM PROCESSING CHEMISTRY

55050	Rapid Access Developer	Four 5 qt. bottles/case (4.7 liters)
55055	Rapid Access Developer	One 5 gal. cubitainer (18.9 liters)
26101	Rapid Access Fixer	Four 5 qt. bottles/case (4.7 liters)
26131	Rapid Access Fixer	One 5 gal. cubitainer (18.9 liters)



A.B. Dick Company
Worldwide Headquarters

7400 Caldwell Avenue • Niles, Illinois 60714 • www.abdick.com
(800) 422-3616 • (847) 779-1900 • (847) 647-6940 Fax